

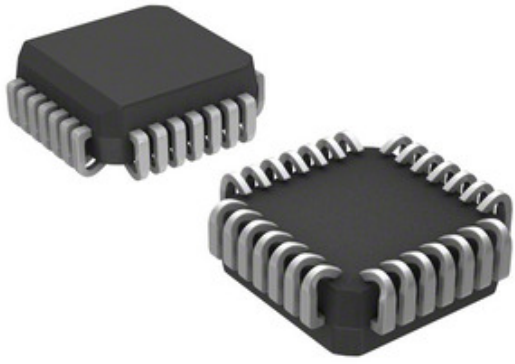
ON Semiconductor **AMI Semiconductor / ON**

## MC100E111FNG

Inombolo yendawo:  
 Umkhiqizi / Umshicileli:  
 Ingcaciso yeMveliso  
 Maxwebhu:  
 RoHS Imeko  
 Umkhumbi  
 Indlela yokuthunyelwa

MC100E111FNG  
 AMI Semiconductor / ON Semiconductor  
 IC CLK BUFFER 1:9 800MHZ 28PLCC  
 MC100E111FNG.pdf  
 Ukukhokela mahala / RoHS Ukuthobela  
 ehong Kong  
 DHL/Fedex/TNT/UPS/EMS

### Semiconductor



Umfanekiso ungabonakaliswa. Bona iinkcukacha zeenkukacha zeemveliso.

**ISICELO**  
**SESIKATSHULWA**

### Iinkcukacha zeMC100E111FNG

INOMBOLO YENDAWO	MC100E111FNG
UMENZI	AMI Semiconductor / ON Semiconductor
INKCAZO	IC CLK BUFFER 1:9 800MHZ 28PLCC
ISIMO SOBUME BENKOKELI / ISIMO SEROHS	Ukukhokela mahala / RoHS Ukuthobela
ISHITI YEDATHA	MC100E111FNG.pdf
UKUNIKEZELA NGEEVOTSI	4.2 V ~ 5.7 V
UHLOBO	Fanout Buffer (Distribution)
IPHAKHEJI YECANDELO LENKONZO	28-PLCC (11.51x11.51)
UCHUNGECHUNGE	100E
UKULINGANISWA - UKUFAKA: ISIPHUMO	1:9
PACKAGING	Tube
IPHAKHEJI / IIMEKO	28-LCC (J-Lead)
ISIPHUMO	ECL, PECL
AMANYE AMAGAMA	MC100E111FNGOS
UKUSHISA OKUSEBENZAYO	-40°C ~ 85°C
INANI LEESEKETHE	1
UHLOBO LOKUPHAKAMISA	Surface Mount
INQANABA LOKUSONDEZA UBUNINZI (MSL)	3 (168 Hours)
IXESHA LENKQUBO YENKOKELI YEHLABATHI	4 Weeks
ISIMO SOBUME BENKOKELI / ISIMO SEROHS	Lead free / RoHS Compliant
INPUT	ECL, PECL
UKUPHINDAPHINDA - UMAX	800MHz
UKWAHLULA - INQAKU: UMPHUMO	Yes/Yes
INKCAZO ECACILEYO	Clock Fanout Buffer (Distribution) IC 1:9 800MHz 28-LCC (J-Lead)
ISIQENDU SENOMBOLO YESISEKO	MC100E111

### Amanqaku afanayo

AMI Semiconductor / ON Semiconductor MC100E111FNG	Umhambisi we-MC100E111FNG	Umboneleli we-MC100E111FNG
Ixabiso le-MC100E111FNG	Imifanekiso ye-MC100E111FNG	Umfanekiso we-MC100E111FNG
Idatha ye-MC100E111FNG yePD	I-MC100E111FNG Khuphela iDatasheet	Idatha ye-MC100E111FNG
Ivenkile ye-MC100E111FNG	Thenga iMC100E111FNG	Thenga iAMI Semiconductor / ON Semiconductor MC100E111FNG
AMI Semiconductor / ON Semiconductor MC100E111FNG	Umboneleli we-AMI Semiconductor / ON Semiconductor	Umhambisi we-AMI Semiconductor / ON Semiconductor
AMI Semiconductor / ON Semiconductor MC100E111FNG	ON Semiconductor MC100E111FNG	Aptina / ON Semiconductor MC100E111FNG
Catalyst Semiconductor / ON Semiconductor MC100E111FNG	PulseCore Semiconductor / ON Semiconductor MC100E111FNG	Sanyo Semiconductor / ON Semiconductor MC100E111FNG

### Iimveliso ezihambelanayo

<p><b>MC100E107FNG</b>                  Abavelisi: AMI Semiconductor / ON Semiconductor                  Inkcazo: IC GATE XOR/XNOR QUINT 28-PLCC                  Ikhona evenkileni: Out stock  <a href="#">RFQ</a></p>	<p><b>MC100E111FN</b>                  Abavelisi: AMI Semiconductor / ON Semiconductor                  Inkcazo: IC CLK BUFFER 1:9 800MHZ 28PLCC                  Ikhona evenkileni: Out stock  <a href="#">RFQ</a></p>
<p><b>MC100E111FNR2</b>                  Abavelisi: AMI Semiconductor / ON Semiconductor                  Inkcazo: IC CLK BUFFER 1:9 800MHZ 28PLCC                  Ikhona evenkileni: Out stock  <a href="#">RFQ</a></p>	<p><b>MC100E107FNR2</b>                  Abavelisi: AMI Semiconductor / ON Semiconductor                  Inkcazo: IC GATE XOR/XNOR QUINT 28-PLCC                  Ikhona evenkileni: Out stock  <a href="#">RFQ</a></p>
<p><b>MC100E112FNG</b>                  Abavelisi: AMI Semiconductor / ON Semiconductor                  Inkcazo: IC DRIVER QUAD ECL N-INV 28PLCC                  Ikhona evenkileni: Out stock  <a href="#">RFQ</a></p>	<p><b>MC100E107FNR2G</b>                  Abavelisi: AMI Semiconductor / ON Semiconductor                  Inkcazo: IC GATE XOR/XNOR QUINT 28-PLCC                  Ikhona evenkileni: Out stock  <a href="#">RFQ</a></p>
<p><b>MC100E112FNR2</b>                  Abavelisi: AMI Semiconductor / ON Semiconductor                  Inkcazo: IC DRIVER QUAD ECL N-INV 28PLCC                  Ikhona evenkileni: Out stock  <a href="#">RFQ</a></p>	<p><b>MC100E107FN</b>                  Abavelisi: AMI Semiconductor / ON Semiconductor                  Inkcazo: IC GATE XOR/XNOR QUINT 28-PLCC                  Ikhona evenkileni: Out stock  <a href="#">RFQ</a></p>
<p><b>MC100E111FNR2G</b>                  Abavelisi: AMI Semiconductor / ON Semiconductor                  Inkcazo: IC CLK BUFFER 1:9 800MHZ 28PLCC                  Ikhona evenkileni: Out stock  <a href="#">RFQ</a></p>	<p><b>MC100E112FNR2G</b>                  Abavelisi: AMI Semiconductor / ON Semiconductor                  Inkcazo: IC DRIVER QUAD ECL N-INV 28PLCC                  Ikhona evenkileni: Out stock  <a href="#">RFQ</a></p>
<p><b>MC100E104FNR2G</b>                  Abavelisi: AMI Semiconductor / ON Semiconductor                  Inkcazo: IC GATE AND/NAND QD 2INP 28-PLCC                  Ikhona evenkileni: Out stock  <a href="#">RFQ</a></p>	<p><b>MC100E112FN</b>                  Abavelisi: AMI Semiconductor / ON Semiconductor                  Inkcazo: IC DRIVER QUAD ECL N-INV 28PLCC                  Ikhona evenkileni: Out stock  <a href="#">RFQ</a></p>